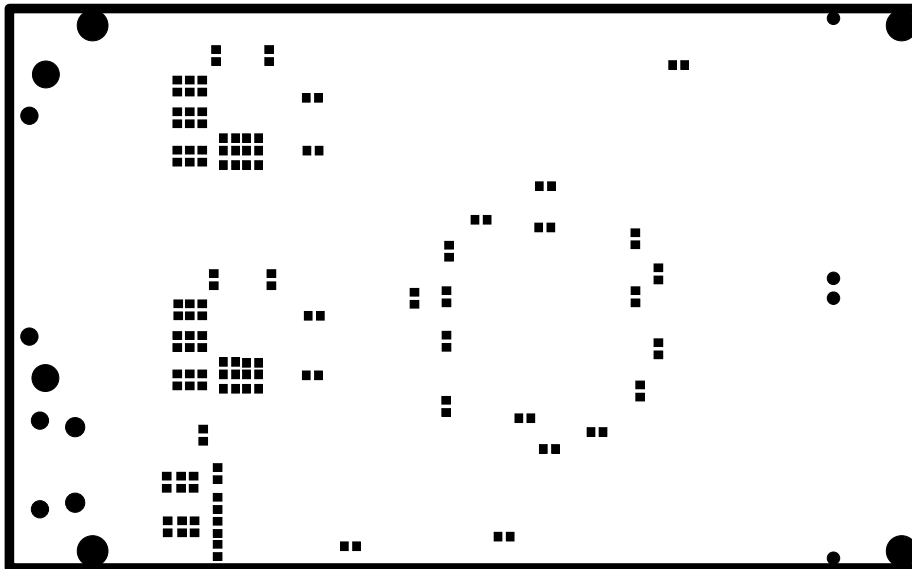



EST/DEM

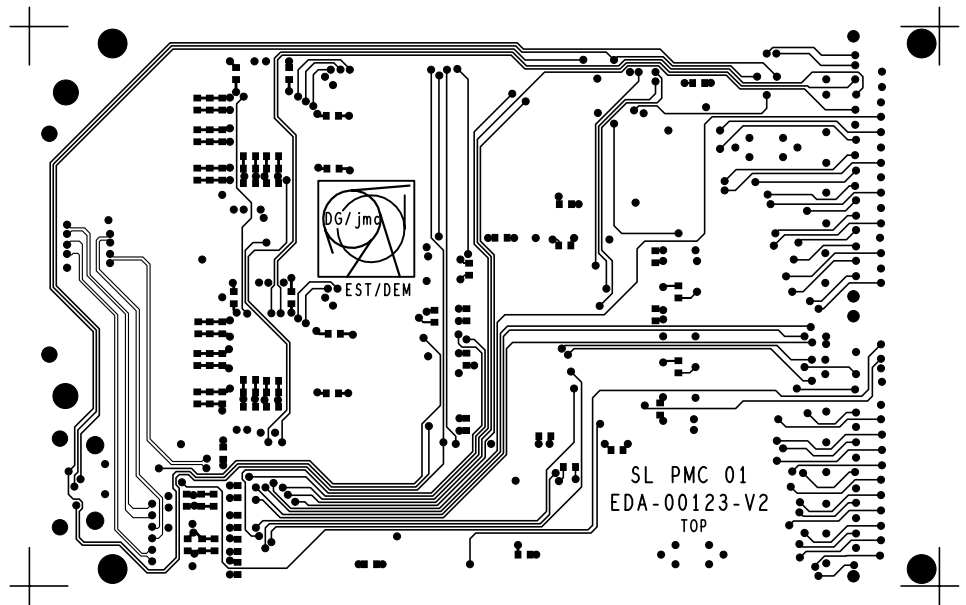
EDA-00123-V2		INDICE	NBRE DE COUCHE : 4
DESS	CEGELEC JMC	-	EP. DU CUIVRE : 35u
DATE	14/08/2003		EP. DU CIRCUIT : 16/10e
			MATIERE DU C1 : EPOXY

SERIGRAPHIE C-SIDE

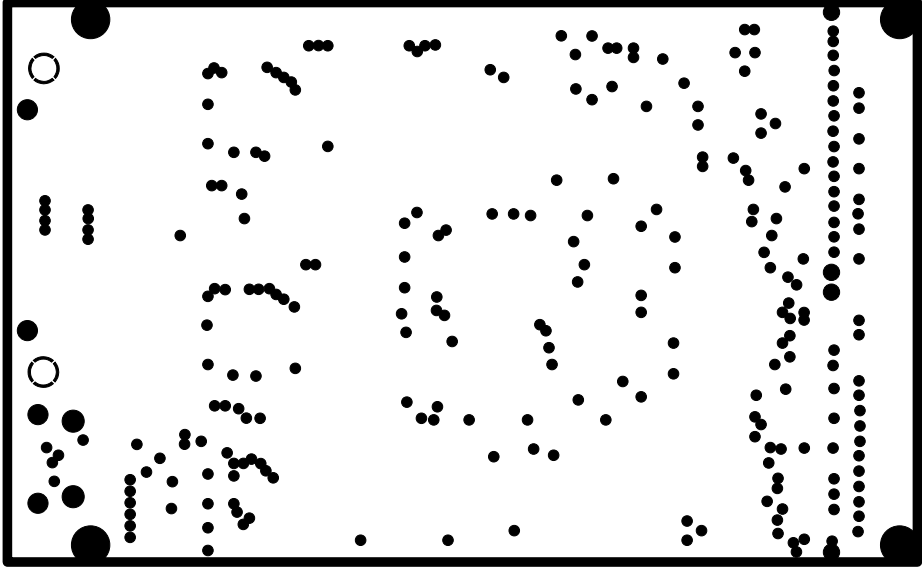


LAQUE ARRET DE SOUDURE C-SIDE

 EST/DEM	EDA-00123-V2		INDICE -	NBRE DE COUCHE : 4
	DESS	CEGELEC JMC		EP. DU CUIVRE : 35u
	DATE	14/08/2003		EP. DU CIRCUIT : 16/10e
				MATIERE DU CI : EPOXY



 EST/DEM	EDA-00123-V2		INDICE -	NBRE DE COUCHE : 4	FACE COMPOSANTS
	DESS	CEGELEC JMC		EP. DU CUIVRE : 35u	
	DATE	14/08/2003		EP. DU CIRCUIT : 16/10e	
				MATIERE DU CI : EPOXY	
				1	

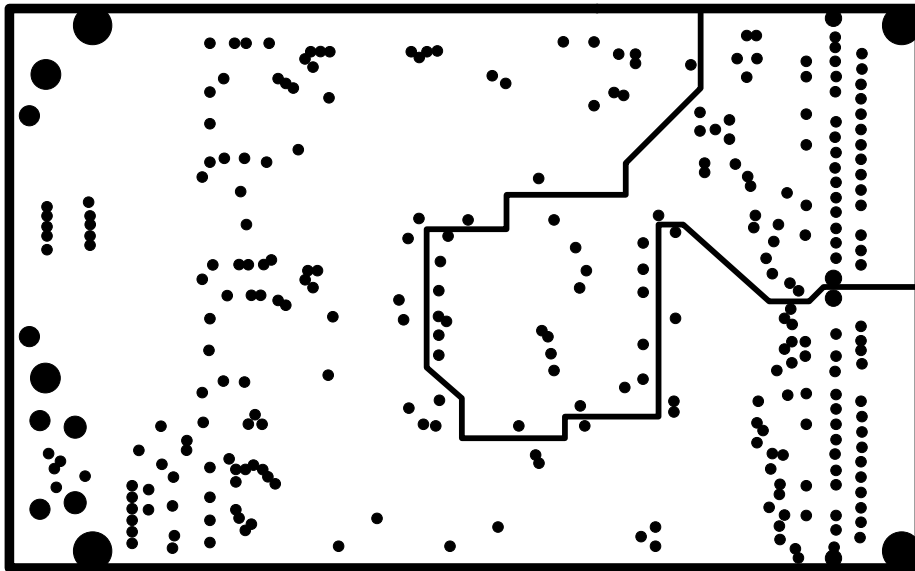


DATE		14\08\2003	MATERIE DU CI : EPOXY	
DESS		CEGELEC JMC	EP. DU CIRCUIT : 16\10e	
EP. DU CUIVRE		: 32u	NBRE DE COUCHE : 4	
EDS		EDA-00153-VS	INDICE	
		-		



PLAN GND

2

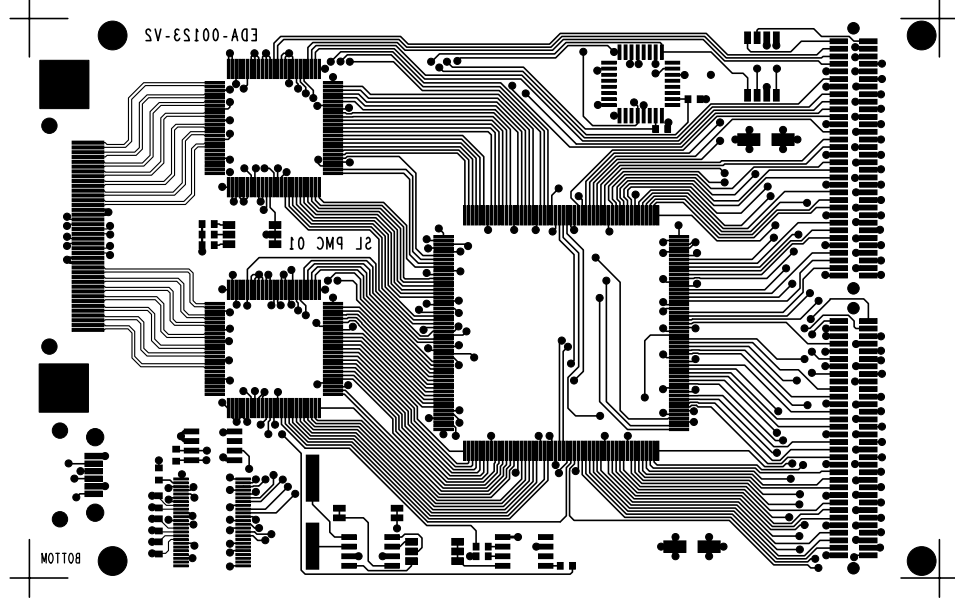



EST/DEM

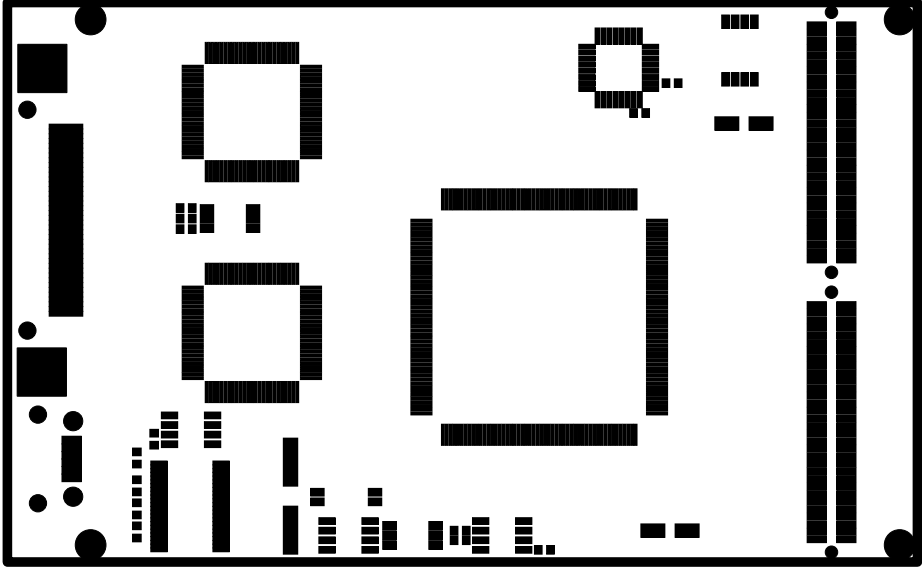
EDA-00123-V2	INDICE -	NBRE DE COUCHE : 4
DESS CEGELEC JMC		EP. DU CUIVRE : 35u
DATE 14/08/2003		EP. DU CIRCUIT : 16/10e
		MATIERE DU CI : EPOXY

PLAN ALIM


		3	
--	--	---	--

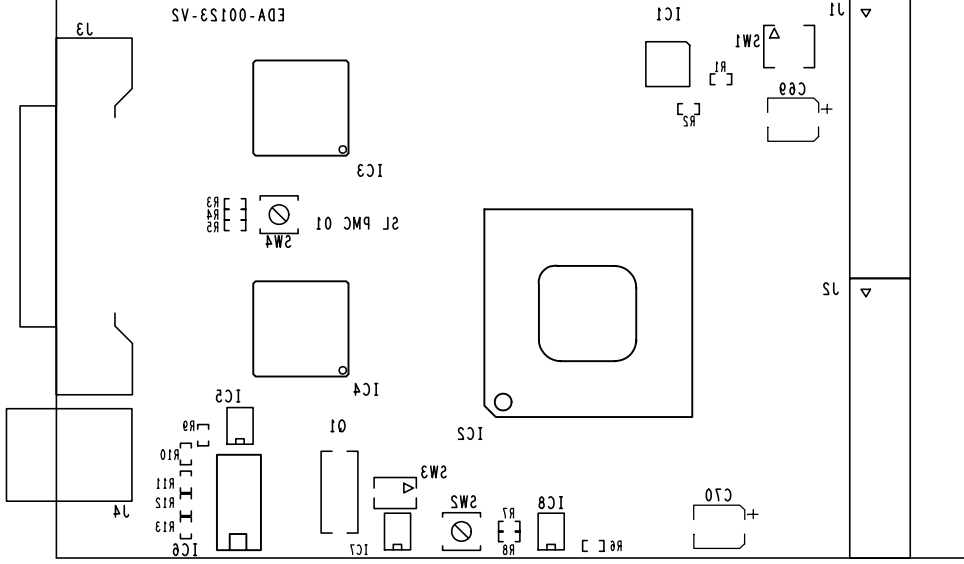


DATE	14\08\2003	MATIERE DU CI	: EPOXY
DESS	CEGELEC JMC	EP. DU CIRCUIT	: 16\10e
		EP. DU CUIVRE	: 32u
		MBRE DE COUCHE	: 4
		FACE SONDREES 4	
ECP\PE2		EDA-001S3-VS - INDICE	



LAQUE ARRET DE SONDURE W-2IDE

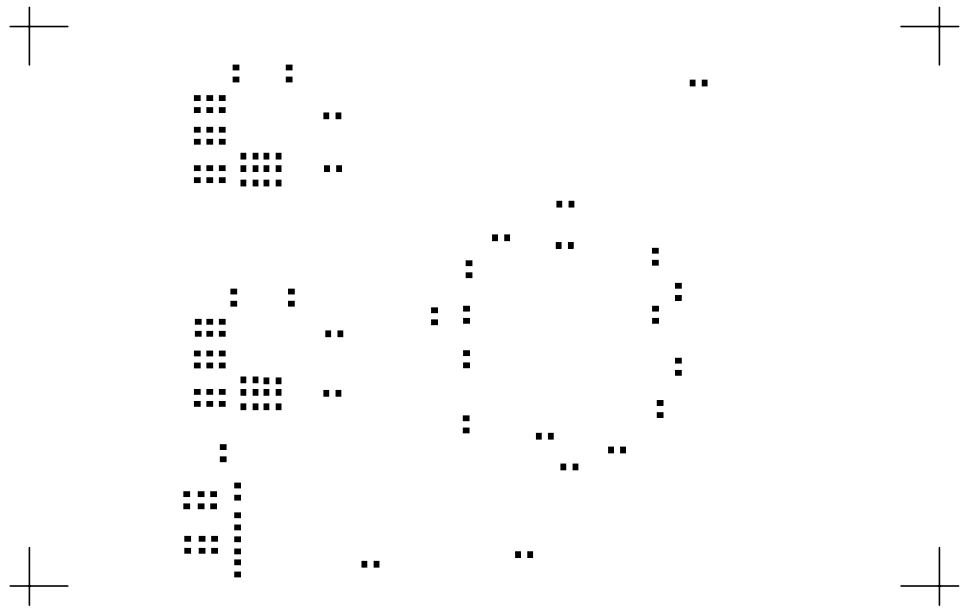
ECP\PE2			
DATE	14\08\2003	DESS	CEGELEC JMC
MATIERE DU CI	: EPOXY	EP. DU CIRCUIT	: 16\10e
EP. DU CUIVRE	: 32u	MBRE DE COUCHE	: 4
		INDICE	-
		EDA-00153-VS	




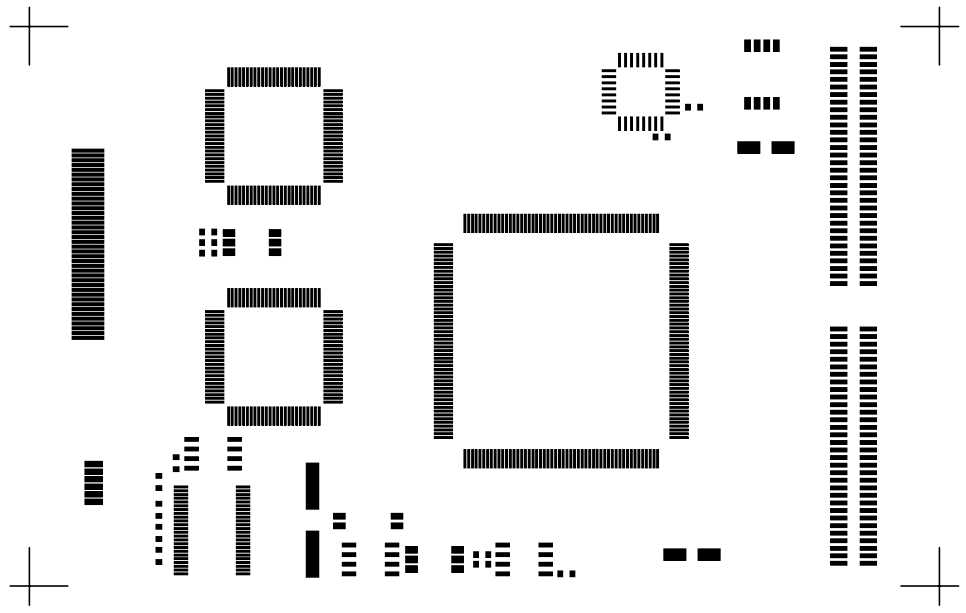
DATE	14\08\2003	MATIERE DU CI	: EPOXY
DESS	CEGELEC JMC	EP. DU CIRCUIT	: 16\10e
		EP. DU CUIVRE	: 32u
		INDICE	
	EDA-001S3-VS	NBRE DE COUCHE	: 4



SERIEGRAPHIE W-2IDE

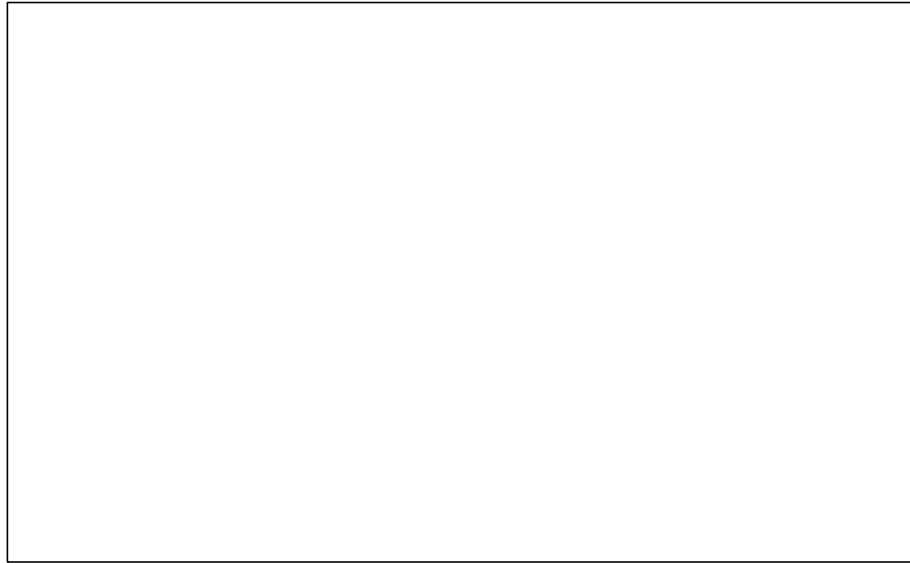


 EST/DEM	EDA-00123-V2		INDICE -	NBRE DE COUCHE : 4
	DESS	CEGELEC JMC		EP. DU CUIVRE : 35u
	DATE	14/08/2003		EP. DU CIRCUIT : 16/10e
				MATIERE DU CI : EPOXY



DATE		14\08\2003	MATERIE DU CI : EPOXY	
DESS		CEGELEC JMC	EP. DU CIRCUIT : 16\10e	
INDICE		-	EP. DU CUIVRE : 32u	
EDS		EDA-00123-VS	NBRE DE COUCHE : 4	





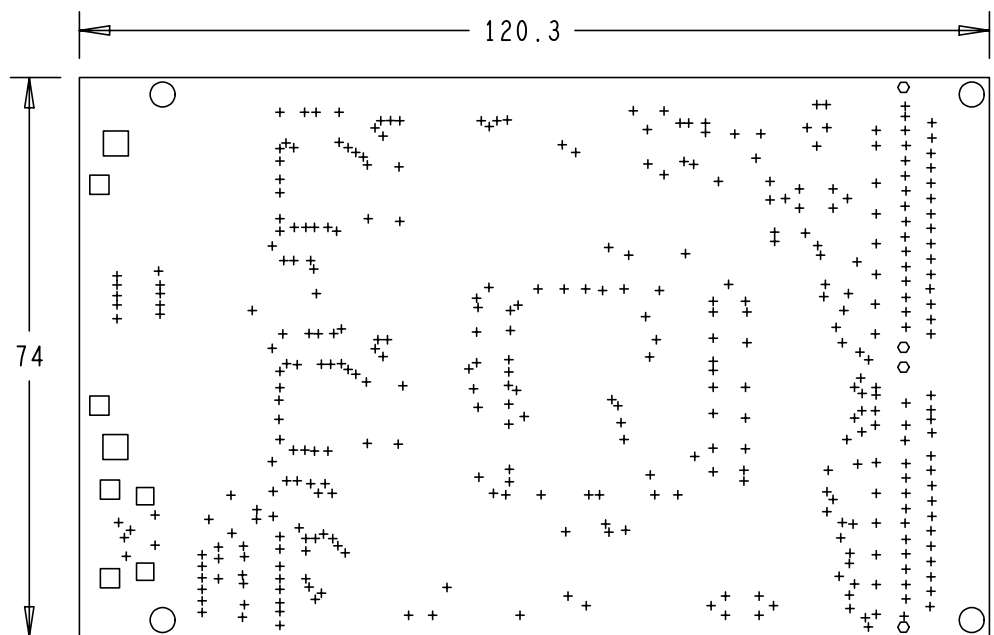



TABLE DES PERCAGES			
ALL UNITS ARE IN MILLIMETERS			
FIGURE	DIA	METAL	QTE
+	0.5	PLATED	361
□	1.6	PLATED	2
□	2.0	PLATED	4
○	2.7	PLATED	4
□	2.8	PLATED	2
○	1.4	NON-PLATED	4

 EST/DEM	EDA-00123-V2	INDICE -	NBRE DE COUCHE : 4
	DESS	CEGELEC JMC	EP. DU CUIVRE : 35u
	DATE	14/08/2003	EP. DU CIRCUIT : 16/10e
			MATIERE DU CI : EPOXY