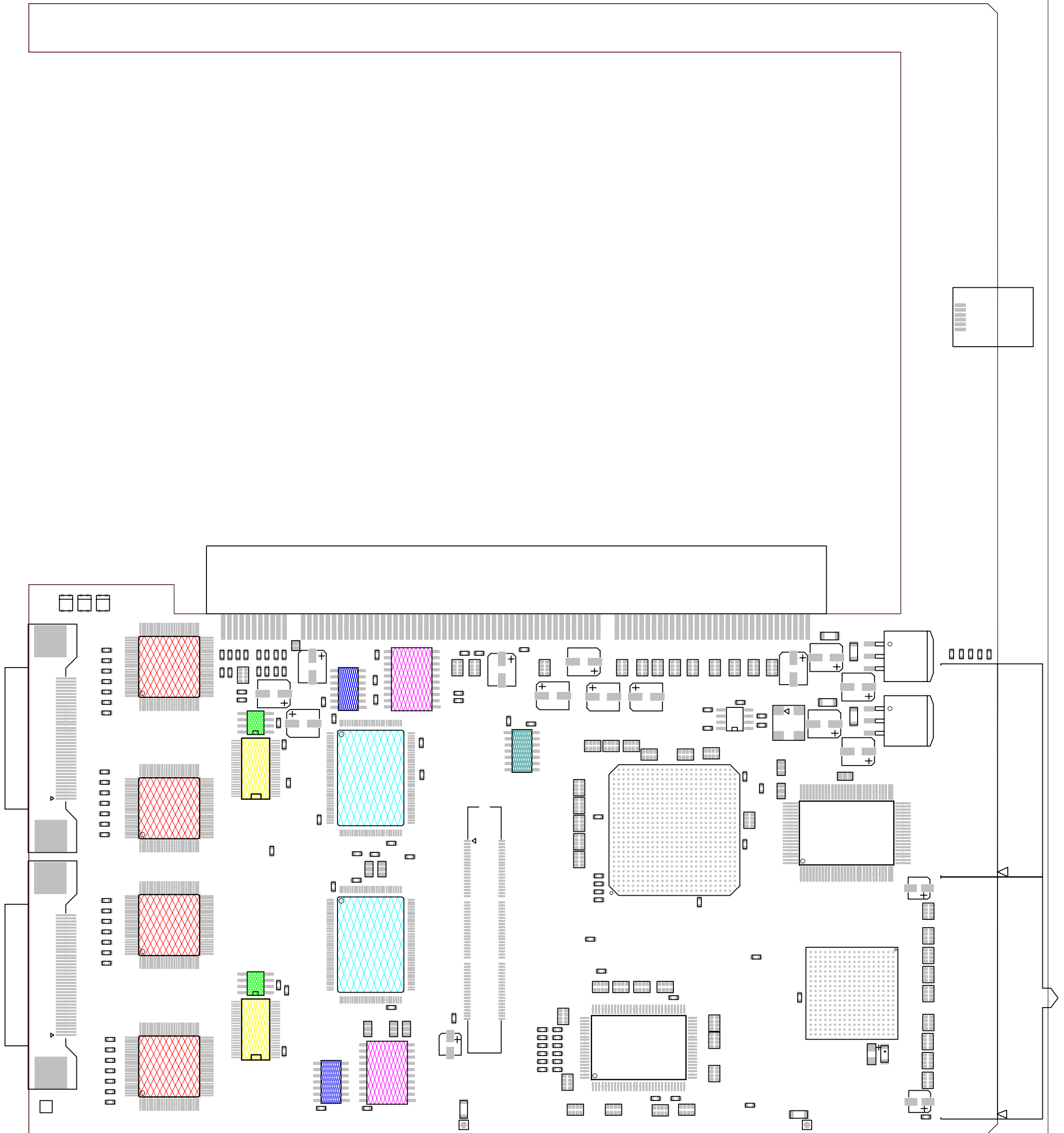
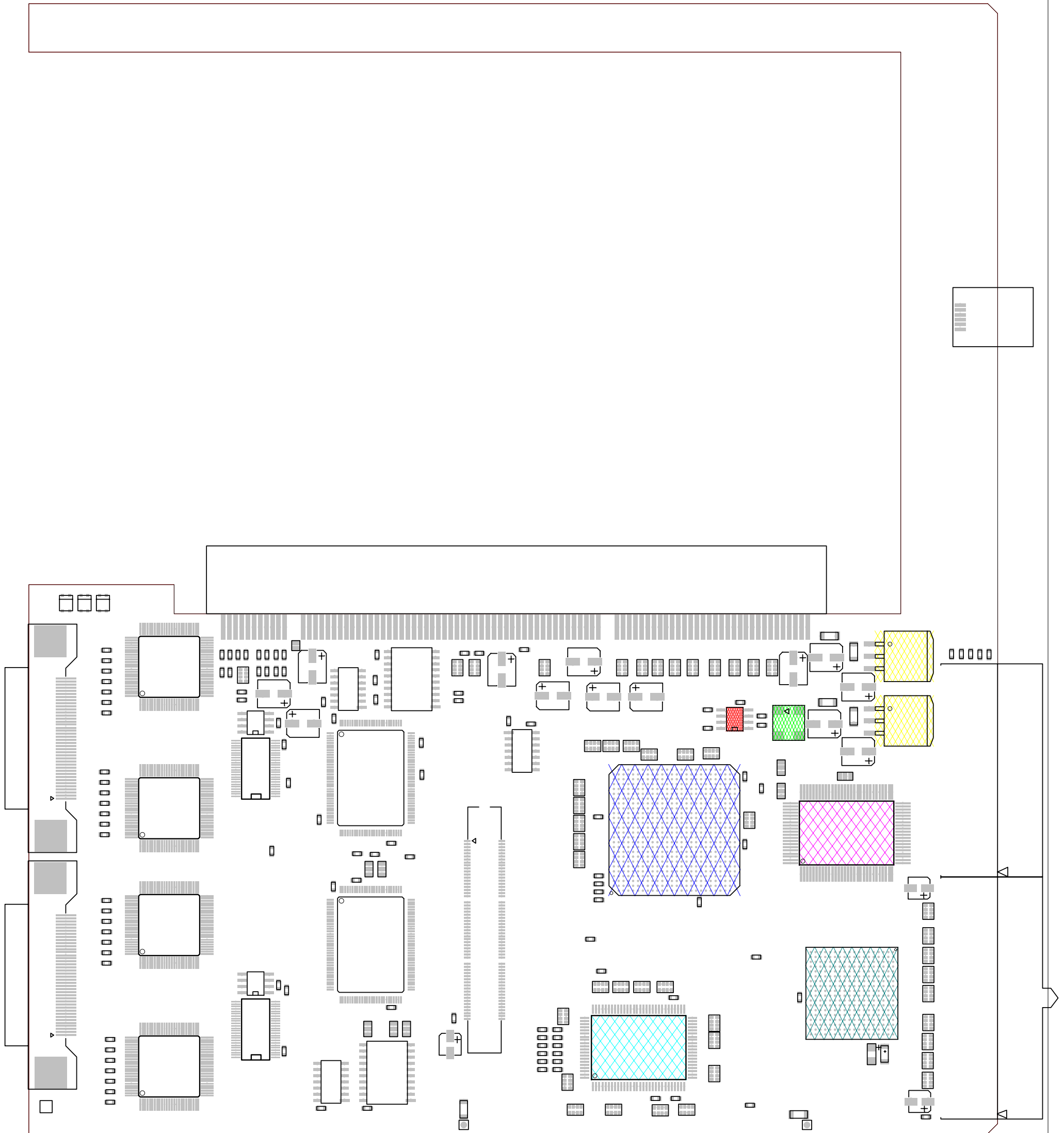


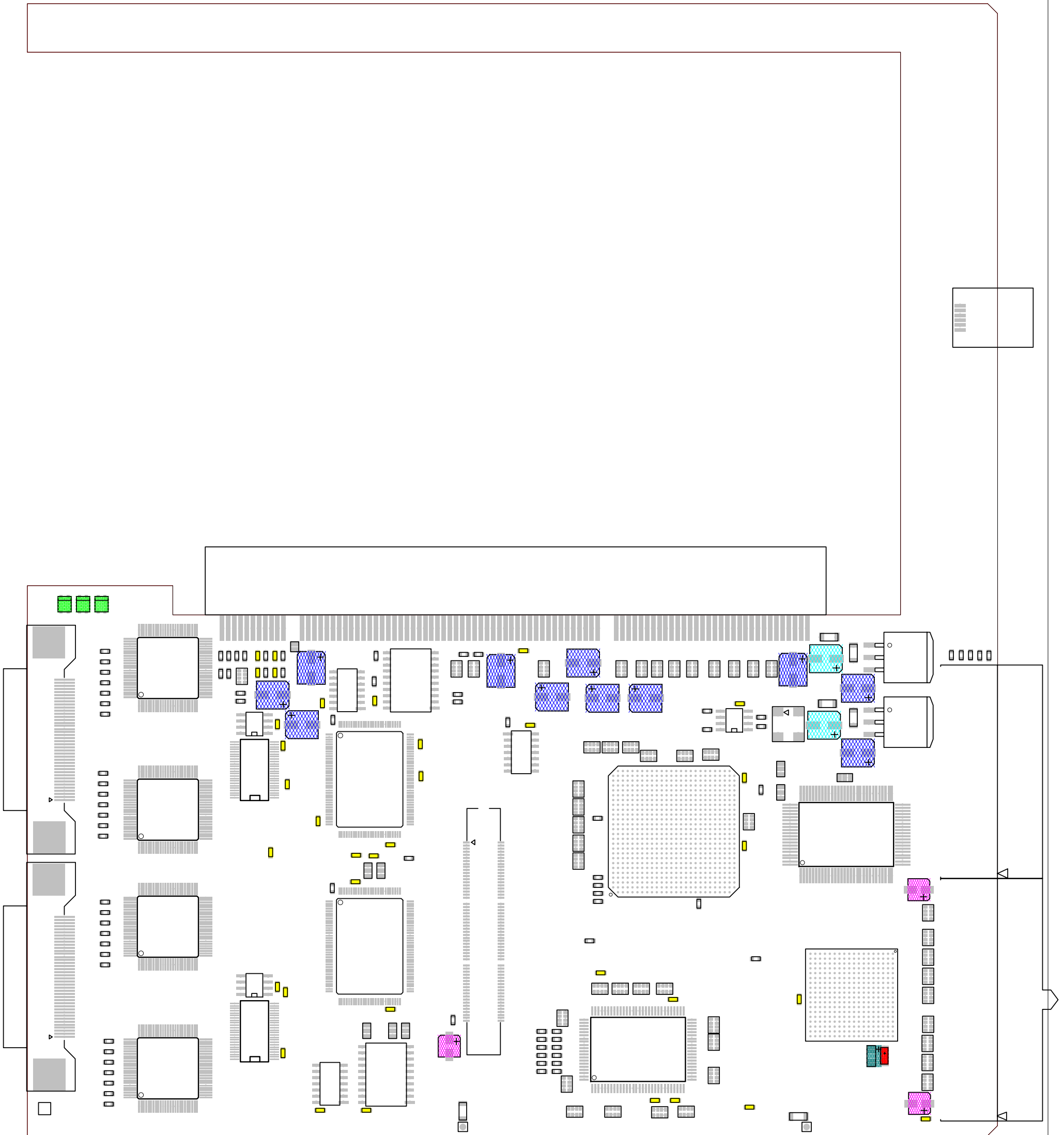
Device	Qty	Value	Tol	Power	Ref part
08_DS90CR484	4	DS90CR484			IC1-IC4
08_57_DS90LV027ATM	2	DS90LV027ATM			IC5, IC7
08_DS90CR215	2	DS90CR215			IC6, IC8
SN74LV32AD	2	SN74LV32AD			IC9, IC13
SN74LV373ADW	2	SN74LV373ADW			IC10, IC14
08_56_IDT72V3660	2	IDT72V3660			IC11-IC12
SN74LV04AD	1	SN74LV04AD			IC15



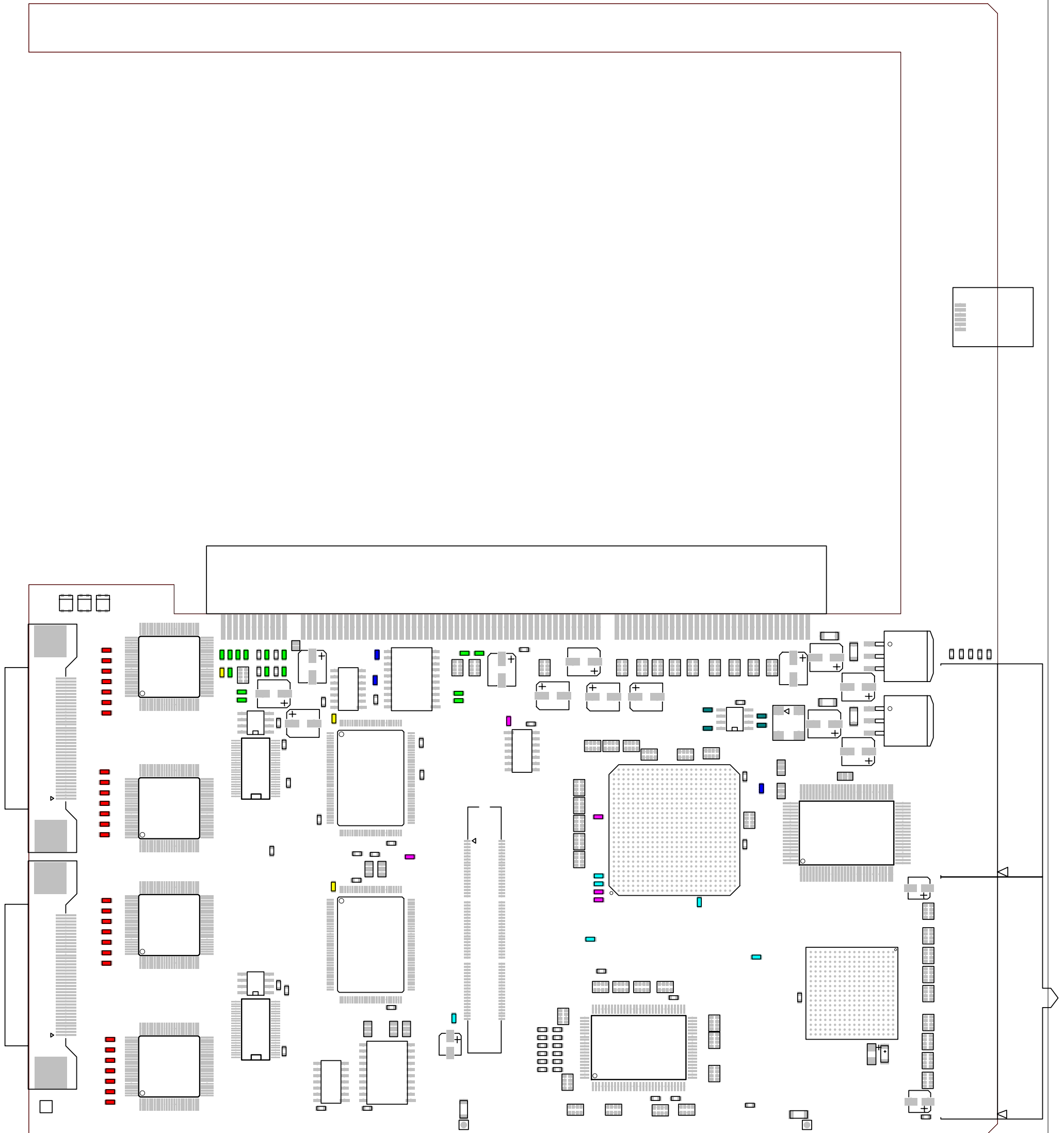
Device	Qty	Value	Tol	Power	Ref part
08.CY2305	1	CY2305			IC16
07.94-100MHZ.IQX071	1	100MHz			IC17
08.57.LM1085IS_ADJ	2	LM1085IS		3A	IC18-IC19
TOP_1	1	EP1SGX10DF672C6			IC20
EPC8	1	EPC8			IC21
MT55L512Y32F	1	MT55L512Y32F			IC22
BRIDGE1_00_1	1	EP20K100EFC324-1			IC23



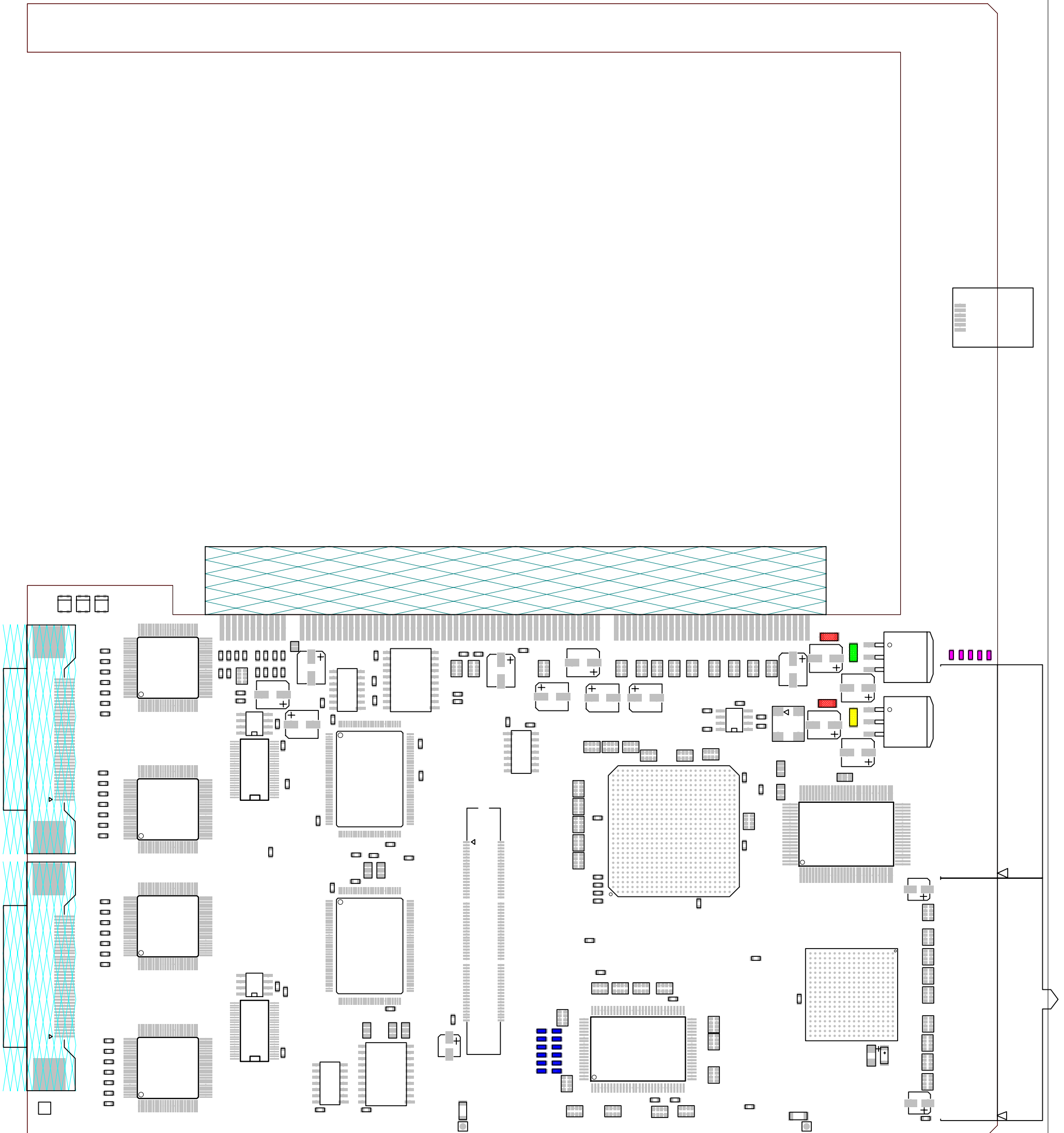
Device	Qty	Value	Tol	Power	Ref part
08.51.10.010.8	1	PML4448			D1
HSMF_C655	3	Red/Green			LD1-LD3
10.03.06.100NF	35	100nF		16V	C1-C4,C7-C9,C11-C24,C26-C27,C29,C31,C35,C41-C48,C52
10.82.ECEV1CA220SR	11	22uF		16V	C5-C6,C10,C28,C30,C32-C34,C36,C38,C40
10.82.ECEV1CA100SR	3	10uF		16V	C25,C49,C51
10.82.ECEV0GA101SR	2	100uF		4V	C37,C39
KEMET-SMD (RADIO SPARES C262-4535)	1	10uF		10V	C50



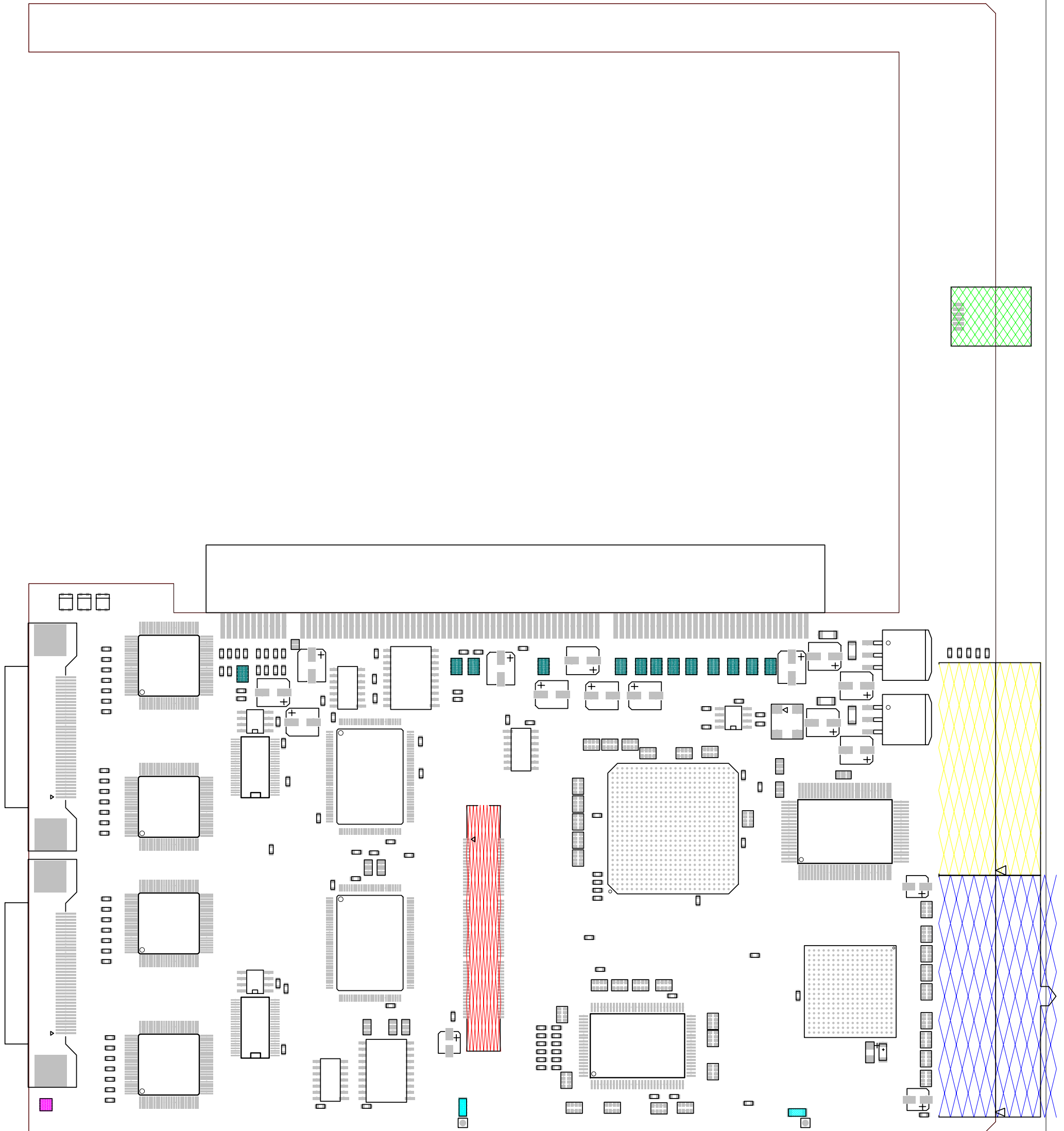
Device	Qty	Value	Tol	Power	Ref part
11.24.03.100R1%	28	100	1%	1/16W	R1-R28
11.24.03.4K7	15	4K7	1%	1/16W	R29-R32,R34-R40,R44-R47
11.24.03.10R	3	10	5%	1/16W	R33,R43,R50
11.24.03.2K1%	3	2.1K	1%	1/16W	R41-R42,R61
11.24.03.220R	5	220	5%	1/16W	R48-R49,R60,R64-R65
11.24.03.2K2	6	2K2	5%	1/16W	R51,R62-R63,R66-R68
11.24.03.10R1%	4	10	1%	1/16W	R52-R55



Device	Qty	Value	Tol	Power	Ref part
11.24.05.212.5	2	120	1%	1/4W	R56,R58
11.24.05.312.2	1	1.2K	1%	1/4W	R57
11.24.05.227.8	1	270	1%	1/4W	R59
11.24.03.150R	12	150R	5%	1/16W	R69-R80
11.24.03.10K	5	10K	5%	1/16W	R81-R85
10240-1210UE	2	10240-1210UE			J1-J2
CON94AB-PCI3U3	1			Not Mounted	J3



Device	Qty	Value	Tol	Power	Ref part
09.767054-3.SM	1	AMP-767054-3			J4
09.HSB.ARA62.SN15A	1	HSB-ARA62-SN15A			J5
17.24.110.210103	1	17.24.110.2102			J6
09.55.CPCISH.J1.REV3.A1B	1	17.21.110.2102			J7
TP	1	TP		Not Mounted	TP1
11.24.05.10M	2	10M	1%	1/4W	RS1-RS2
11.48.10.15K	13	15K		FARNELL	RZ1-RZ13



Device	Qty	Value	Tol	Power	Ref part
11.48.10.220R	22	220		FARNELL	RZ14-RZ16, RZ20-RZ38
11.48.10.2K2	3	2K2		196 794 (FARNELL)	RZ17-RZ19
11.48.10.10R	9	10		FARNELL	RZ39-RZ47
PAD2	1	SMD Jumper		Not Mounted	ST1
PAD3	8	SMD Jumper		Not Mounted	ST2-ST4, ST6-ST10
PAD1	2	test pin		Not Mounted	ST11, ST13

